

# Z-MAX™ 6A UTP OUTLETS

Combining exceptional category 6A performance with best-in-class termination time, the Z-MAX 6A UTP outlet is a vital part of an end-to-end Z-MAX 6A UTP cabling system. The Z-MAX module exceeds all applicable industry standards, including ANSI/TIA-568-C.2 and Amendments 1 and 2 of ISO/IEC 11801 2<sup>nd</sup>ed.

This exceptional performance is achieved through Z-MAX's innovative Z-TOOL termination process, Zero-Cross termination module, unique diagonal IDC alignment for alien cross-talk control and advanced tuning capabilities in conjunction with the patented PCB-based smart plug technology integrated into Z-MAX patch cords.



**PATENTED**



**Z-MAX™**

**WORK AREA**

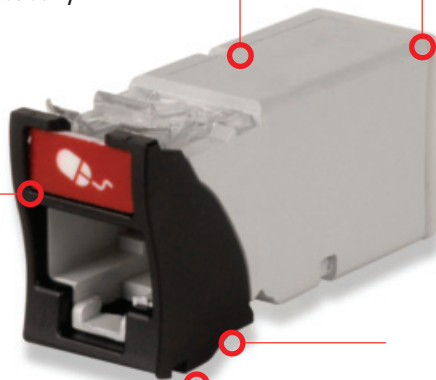
## STANDARDS COMPLIANCE

- ANSI/TIA-568-C.2
- ISO/IEC 11801 2<sup>nd</sup> ed Amendment 1
- ETL Tested
- IEEE 802.3an
- IEEE 802.3af (PoE)
- IEEE 802.3at (PoE+)
- ANSI/TIA 1096-A
- IEC 60603-7-4
- IEC 60512-99-001 (3rd party verified)

Robust glass-reinforced nylon housing provides durability

Terminates in as little as 60 seconds using the Z-Tool

High visibility colored icons for port identification are provided in a convenient, one-piece frame. Also compatible with outlet door



Outlets are available in a wide range of colors and mount in MAX faceplates and accessories. Keystone version also available

Pass-thru feature allows mounting from either side of a faceplate

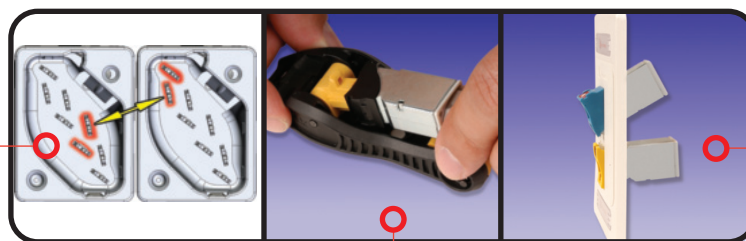
Optional spring loaded door minimizes exposure to dust and other contaminants.

Zero-cross termination module accelerates lacing and eliminates pair crossing



Rapid connection of cable jacket strain relief via integrated hinged metal clip

Diagonal IDC alignment maximizes outlet to outlet pair separation to ensure AXT performance in high density environments



Universal design allows the same outlet to be mounted in flat or angled orientation

The ergonomic and easy-to-use Z-Tool ensures a simple low-force termination

# PRODUCT INFORMATION

## Performance Specifications:

ELECTRICAL	
Contact Resistance	20 mΩ
Input to Output Resistance	200 mΩ
Min. Dielectric Withstand Voltage (contact to contact)	1000 V DC or AC peak
Min. Dielectric Withstand Voltage	1500 V DC or AC peak
Insulation Resistance	500 MΩ
Compatibility	Backwards to cat 5e and cat 6
Current Rating	1.5 A PoE, PoE+
POE	Suitable for PoE and PoE+
MECHANICAL – GENERAL	
Operating Temperature	-10 to 60 °C (14 to 140 °F)
Flammability Rating	UL 94 V-0
Green Features	RoHS, lead-free, halogen-free, PVC free
Housing Material	Glass-reinforced nylon
Contact Materials	Plated phospher bronze, stainless steel
Plastic Materials	Flame retardant themoplastic
Dimensions (LxWxH)	41.2x14.5x21.2mm (1.6x.570x.832 in.)

MECHANICAL – JACK	
Number of Plug Insertion Cycles	2500
Min. Contact Force	50g
Min. Plug Retention Force	50N
Plug Compatibility	Compatible with RJ45 (8-position) or RJ11 (6-position) plugs

MECHANICAL – TERMINATION	
Wire Size Range (nominal)	23-26 AWG solid and stranded
Wire Insulation Diameter Range (max)	1.48mm (0.058)
Conductor OD Size (max)	0.60mm (0.023)
Cable OD (max)	9mm (0.354)
Reterminations	5
Wiring	T568A/B

Use (XX) to specify color:  
 01 = black, 02 = white, 03 = red, 04 = gray, 05 = yellow,  
 06 = blue, 07 = green, 09 = orange, 20 = ivory,  
 25 = bright white, 80 = light ivory, 82 = alpine white

The hybrid outlet mounts into MAX® mounting hardware. It includes an icon card consisting of four attached icons: one color-matching, one red, one blue, and one blank icon.

The keystone version is designed for integration with various international mounting products and is not compatible with MAX mounting hardware. The icon is not compatible with keystone outlets.

### Z-MAX™ 6A UTP Outlets:

Z6A-(XX).....Z-MAX 6A UTP module, hybrid (flat/angled)

Z6A-(XX)D.....Z-MAX 6A UTP module with door, hybrid (flat/angled)

Z6A-K(XX).....Z-MAX 6A UTP module, keystone\*

Z6A-P.....Z-MAX 6A UTP panel outlet

Add "B" to the end of the part number for bulk pack of 100 outlets.

\* Note: Keystone module not available with door



Z6A



Z6A-(XX)D



Z6A-K



Z6A-P

Because we continuously improve our products, Siemon reserves the right to change specifications and availability without prior notice.

Z-MAX™, TERA® and MAX® are trademarks of Siemon

### For additional resource information:

Visit our web site at [www.siemon.com](http://www.siemon.com)

#### The Americas

Watertown, CT USA  
 Phone (1) 860 945 4200 US  
 Phone (1) 888 425 6165 Canada

#### Europe/Middle East/Africa

Surrey, England  
 Phone (44) 0 1932 571771

#### Asia/Pacific

Shanghai, P.R. China  
 Phone (86) 21 6390 6778

#### Latin America

Bogota, Colombia  
 Phone (571) 317 2121