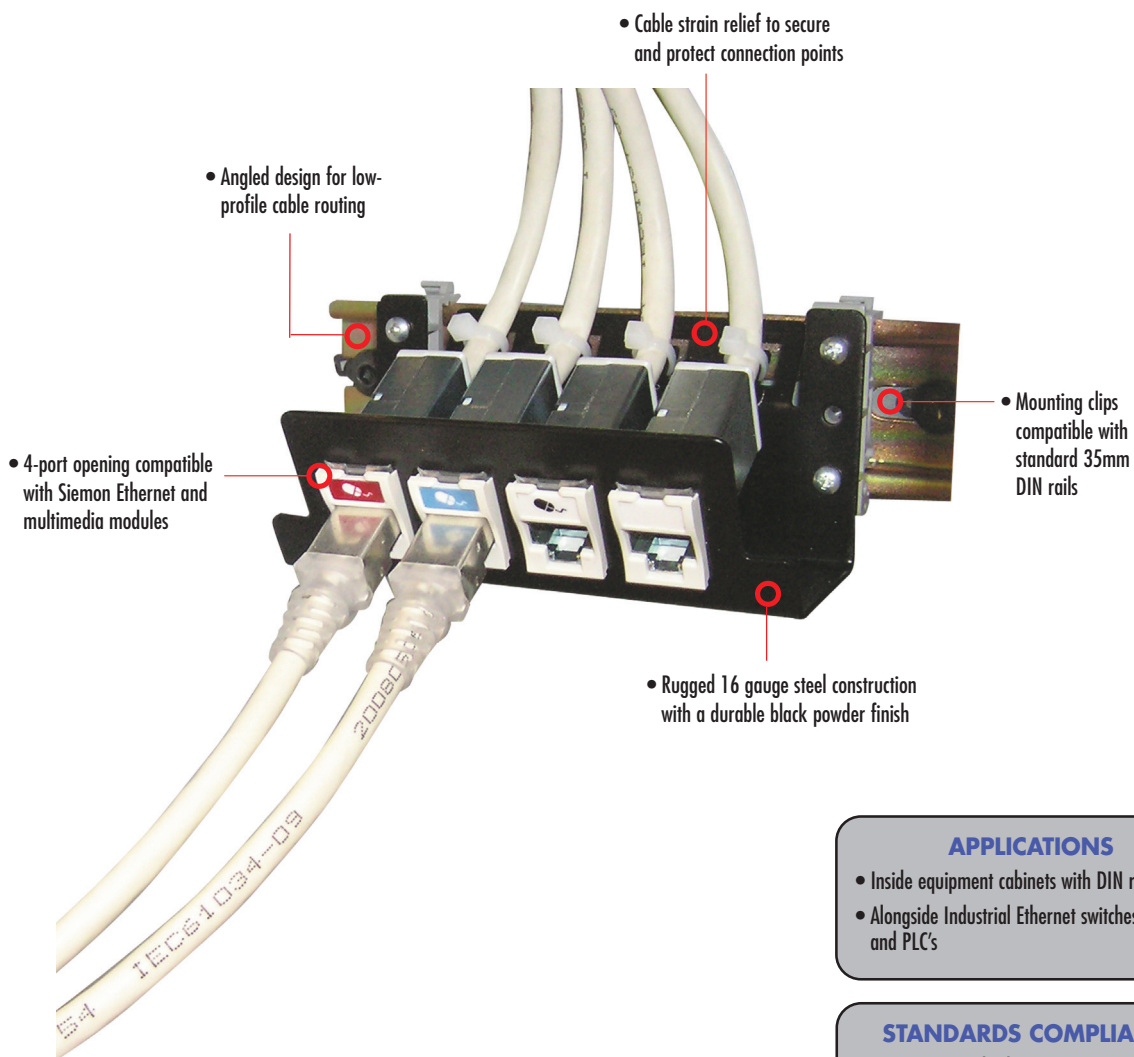


DIN Rail Mounted Patch Panel

DIN Rail Mounted Patch Panels provide an effective patching solution for industrial networks inside control panels and distribution cabinets where DIN mounted equipment is being used. The modular design accommodates copper, fiber and multimedia modules to support most applications. The low-profile angled design minimizes cable bend radius in shallow enclosures where space is a premium and can be side stackable to grow with your networking changes.



APPLICATIONS

- Inside equipment cabinets with DIN rails
- Alongside Industrial Ethernet switches and PLC's

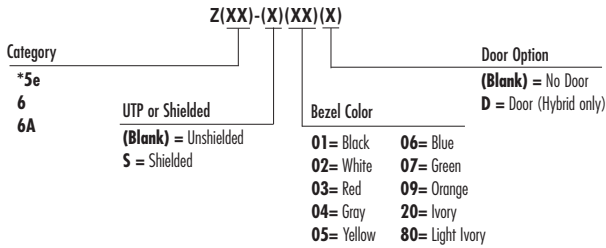
STANDARDS COMPLIANCE

- European Standard EN 50022
- IEC International Standard 60715

DIN Rail Mounted Patch Panel

Compatible Modules and Outlets

Z-MAX Outlets - Category 5e, 6 and 6A UTP and shielded



Hybrid outlet includes one printed red, blue, white, black icon set.

*5e available shielded only

MAX Fiber Adapter Modules - LC, SC, ST



- | | | | |
|---|---|---|---|
| MX-F-LC(X)-(XX) | MX-F-SA-(XX) | MX-F-SC-(XX)* | MX-F-S2-(XX)* |
| Flat module with 1 duplex LC adapter (2 fibers) | Flat module with 1 simplex ST adapter (1 fiber) | Flat module with 1 duplex SC adapter (2 fibers) | Flat module with 1 duplex ST adapter (2 fibers) |

Use (X) to specify LC adapter color: blank = beige, U = blue

Use (XX) to specify color: 01 = black, 02 = white, 04 = gray, 20 = ivory, 25 = bright white, 80 = light ivory

Modules include dust caps, one color-matching, one red, and one blue icon per port.

*These modules can be used only with DIN-PNL-04W-01

MAX Multi Media



- | | | |
|---|---|---|
| MX-F-RC-(XX) | MX-F-FA-(XX) | MX-F-BA-(XX) |
| Flat module with 1 RCA connector with solder tail | Flat module with 1 F-type adapter, 75 ohms, 2 GHz | Flat module with 1 BNC adapter, 75 ohms |

Use (XX) to specify color: 01 = black, 02 = white, 04 = gray, 20 = ivory, 25 = bright white, 80 = light ivory

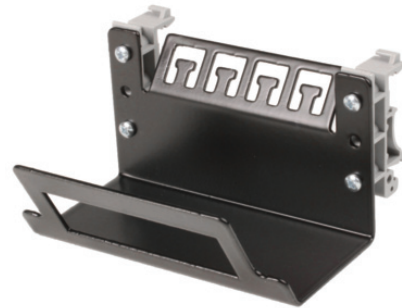
Modules include one color-matching, one red, and one blue icon.

Ordering Information:

DIN-PNL-04-014-port panel, black powder coat



DIN-PNL-04W-01Open port panel to accommodate duplex fiber modules, black powder coat



Note: When using shielded jacks bond other end of link to ground

Contact SIS technical support for additional sizes and configurations not shown

For additional resource information:

Visit our web site at www.siemon.com/SIS

Siemon Interconnect Solutions

Watertown, CT USA

Phone (1) 860 945-4213

E-Mail - Customer Service. - SIS_customerservice@siemon.com

E-Mail - Technical Support. - SIS_techsupport@siemon.com